

OLYMPIC

ELITE RESIDENCES

WWW.CYCONHOMES.COM

INFO@CYCONHOMES.COM

TEL +357 99 531241

CYCON

HOME

OLYMPIC

ELITE RESIDENCES



OLYMPIC ELITE
RESIDENCES



OLYMPIC
ELITE RESIDENCES

Introduction and location:

The fastest growing city of Cyprus, Larnaca is the rising star of the island.

Larnaca is getting modernized but at the same time keeping its traditional character and easy way of living.

Getting transformed constantly and rapidly through a number of multi billion euros projects as the New Larnaca Marina -Larnaca Land of Tomorrow and others and with easy access through its airport , it is the perfect place for either vacation spot, permanent living or business hub.



Oroklini is a stunning coastal area in Larnaca, where city life blends harmoniously with the charm of seaside living and a thriving business and educational atmosphere.



- Blue flag beaches
- 5 star hotels and Spa
- Excellent dining establishments
- Variety of international coffee chains
- International Educational Institutions
- Beach sports
- Sports activities
- Seaside pedestrian trails

CY CON
HOMES

OLYMPIC
ELITE RESIDENCES

The PROJECT: *OLYMPIC ELITE Residences* is located in a quiet residential area with unobstructed city and sea views.

It consists of 8 apartments – One and Two bedrooms – with the penthouses enjoying an enormous roof garden with stunning sea views.

All apartments benefit from a covered parking space as long as a storage room at the ground floor.



**MAJOR
AMENITIES:**

- 1000 meters to sandy beaches
- 10 mins drive to Larnaca center
- 20 mins to Larnaca airport
- 5 mins drive to international universities
- 5 mins to 5 ★ hotels and spa
- Plethora of exceptional restaurants
- 5 mins drive to Larnaca Land of Tomorrow development.



OLYMPIC ELITE RESIDENCES



A charming residential building nestled in a peaceful, serene area, offering a perfect blend of convenience and tranquillity.

Large windows stretch across the building, maximizing the stunning sea views.

Its location is ideal—quiet, yet easily accessible, with smooth, well-maintained roads leading to the entrance.



OLYMPIC ELITE RESIDENCES

Spacious apartments, with open-concept living spaces that allow for an uninterrupted city and sea views from every room. The interiors boast high-end finishes, from marble countertops to sleek hardwood floors, and private balconies where you can sit back and watch the sunset over the horizon.



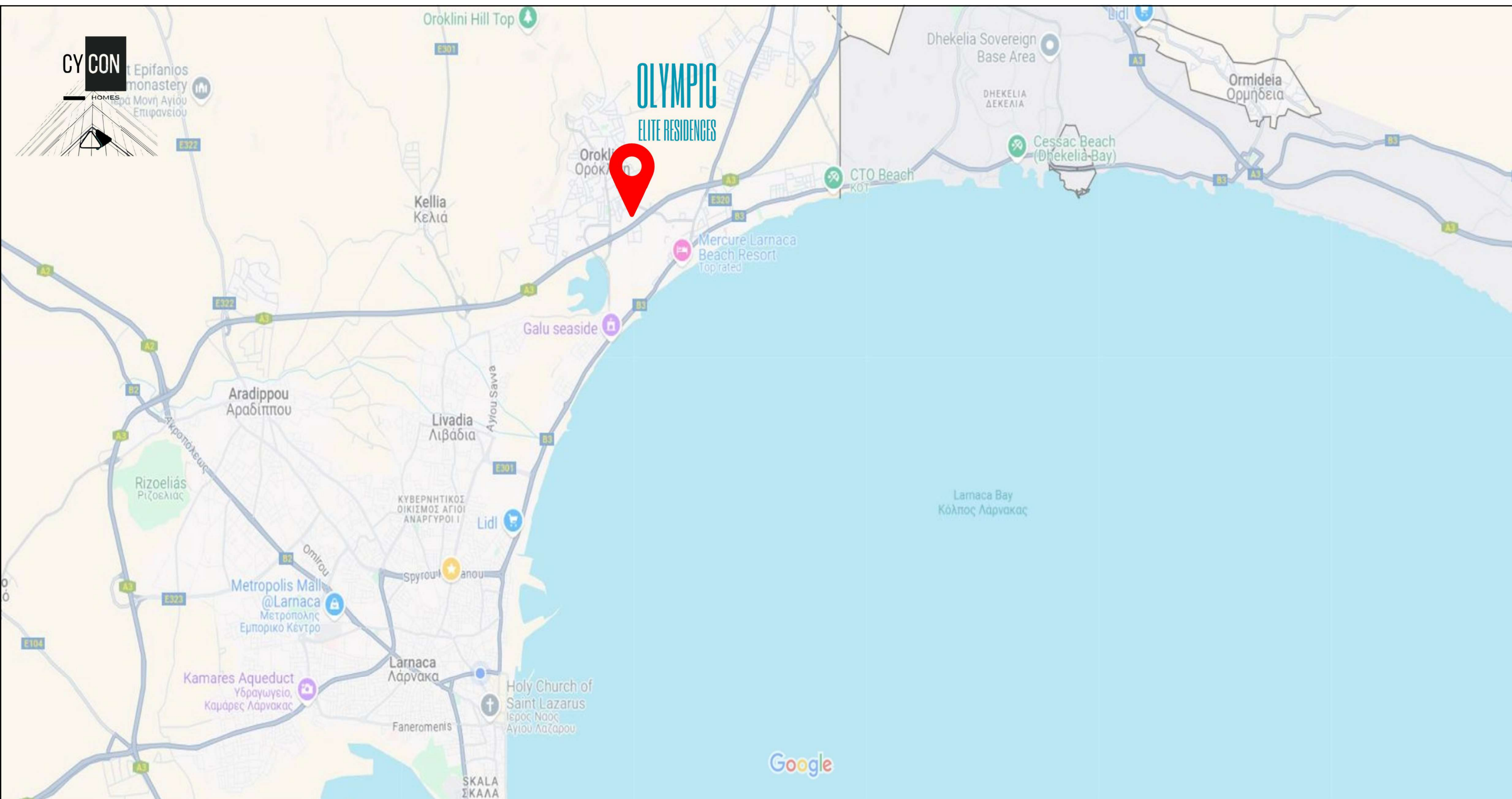


OLYMPIC

ELITE RESIDENCES



Stunning roof garden with unobstructed sea view, designed for relaxation and social gatherings. The space is ideal for outdoor dining.



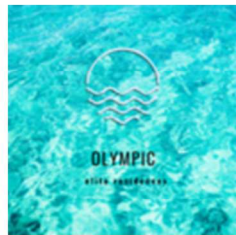
WWW.CYCONHOMES.COM

INFO@CYCONHOMES.COM

TEL +357 99 531241



FLOOR PLANS



OLYMPIC
ELITE RESIDENCES



APT. 101 / 201

1BED

55.0 M2	INTERNAL AREA
19.2 M2	COVERED VERANDA
1	BATH
1	COVERED PARKING
1	STORAGE

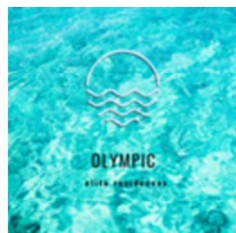
CYCON
HOMES

FLOOR PLANS : 1ST / 2ND FLOOR

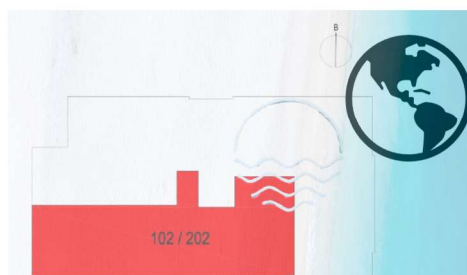
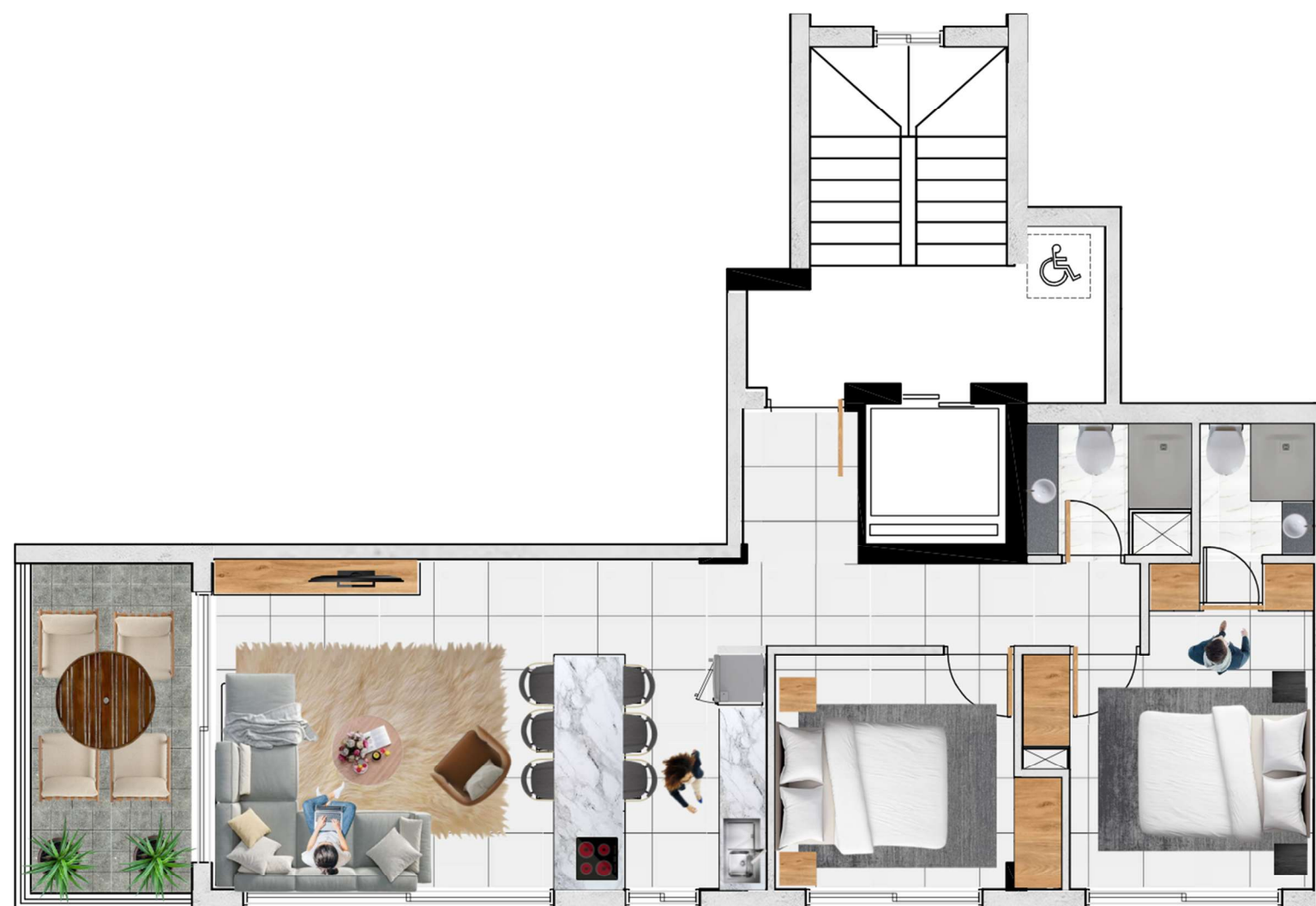
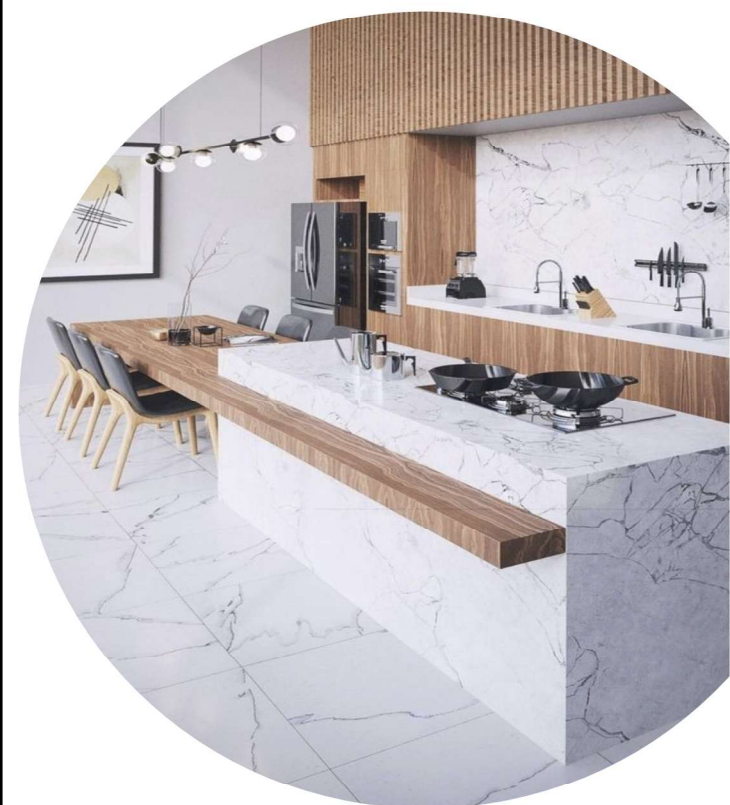
WWW.CYCONHOMES.COM

INFO@CYCONHOMES.COM

TEL +357 99 531241



OLYMPIC
ELITE RESIDENCES



APT. 102 / 202

2BED

84.0 M2	INTERNAL AREA
10.2 M2	COVERED VERANDA
2	BATHS
1	COVERED PARKING
1	STORAGE

CYCON
HOMES



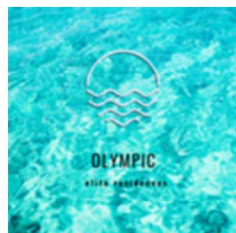
FLOOR PLANS : 1ST / 2ND FLOOR

WWW.CYCONHOMES.COM

INFO@CYCONHOMES.COM

TEL +357 99 531241

2



OLYMPIC
ELITE RESIDENCES



FLOOR PLANS : 1ST / 2ND FLOOR



103 / 203

APT. 103 / 203

1BED

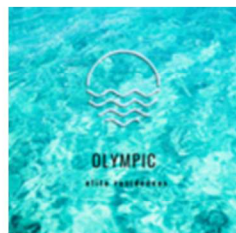
53.0 M2	INTERNAL AREA
8.15 M2	COVERED VERANDA
1	BATH
1	COVERED PARKING
1	STORAGE

CYCON
HOMES

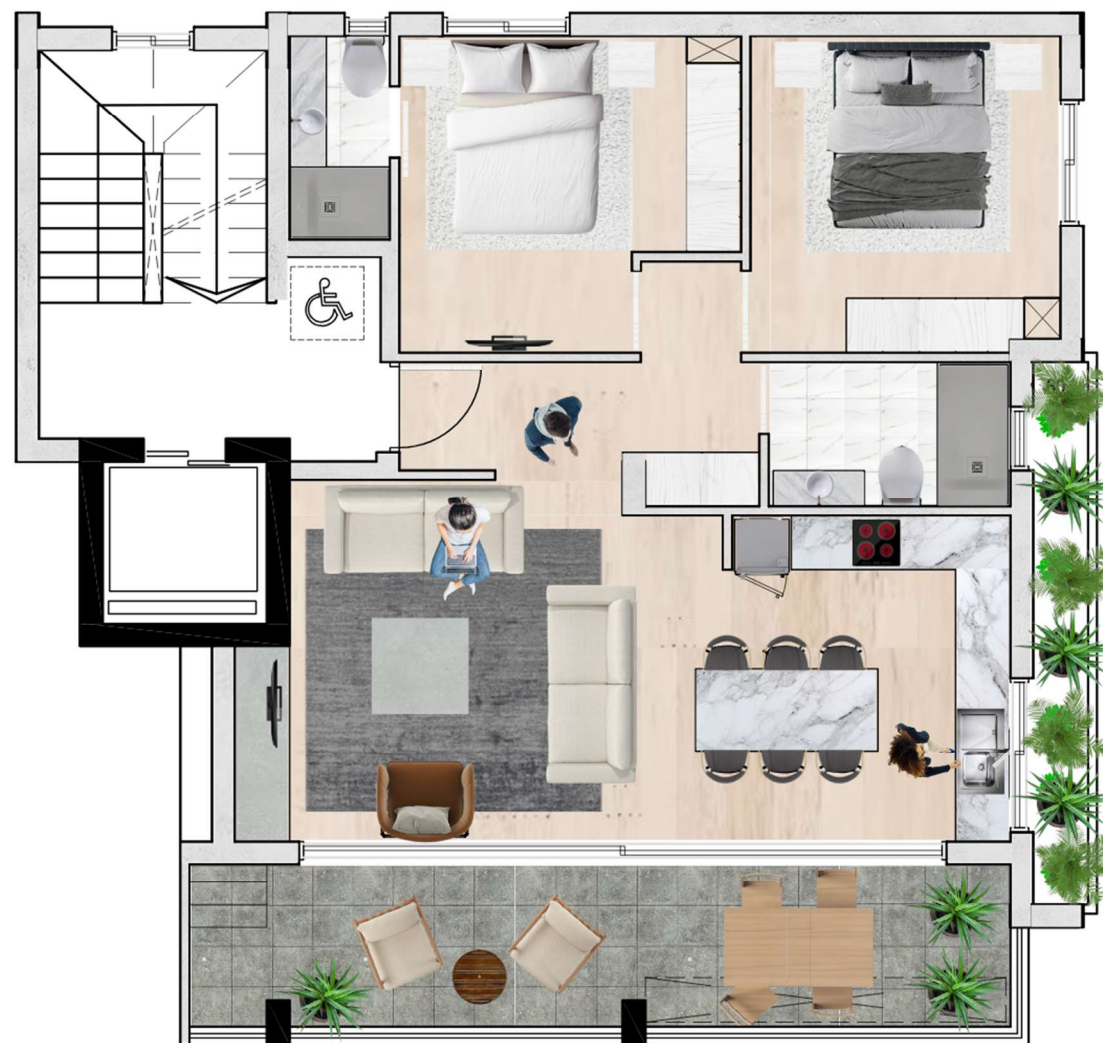
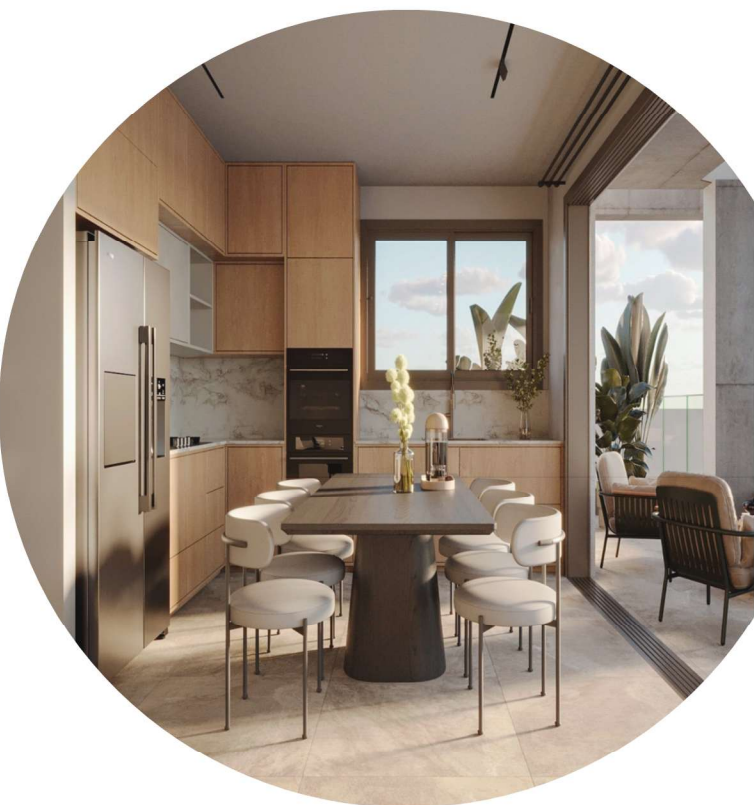
WWW.CYCONHOMES.COM

INFO@CYCONHOMES.COM

TEL +357 99 531241



OLYMPIC
ELITE RESIDENCES



APT. 301

2BED

87.50 M2	INTERNAL AREA
16.25 M2	COVERED VERANDA
45.00 M2	ROOF GARDEN
2	BATHS
1	COVERED PARKING
1	STORAGE

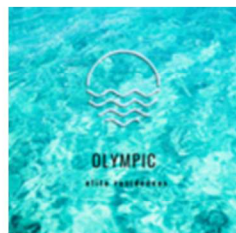
CYCON
HOMES

FLOOR PLANS : 3 RD FLOOR

WWW.CYCONHOMES.COM

INFO@CYCONHOMES.COM

TEL +357 99 531241



OLYMPIC
ELITE RESIDENCES



APT. 302

2BED

86.50 M2	INTERNAL AREA
15.55 M2	COVERED VERANDA
46.00 M2	ROOF GARDEN
2	BATHS
1	COVERED PARKING
1	STORAGE

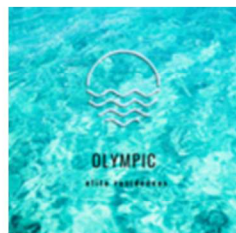
CYCON
HOMES

FLOOR PLANS : 3 RD FLOOR

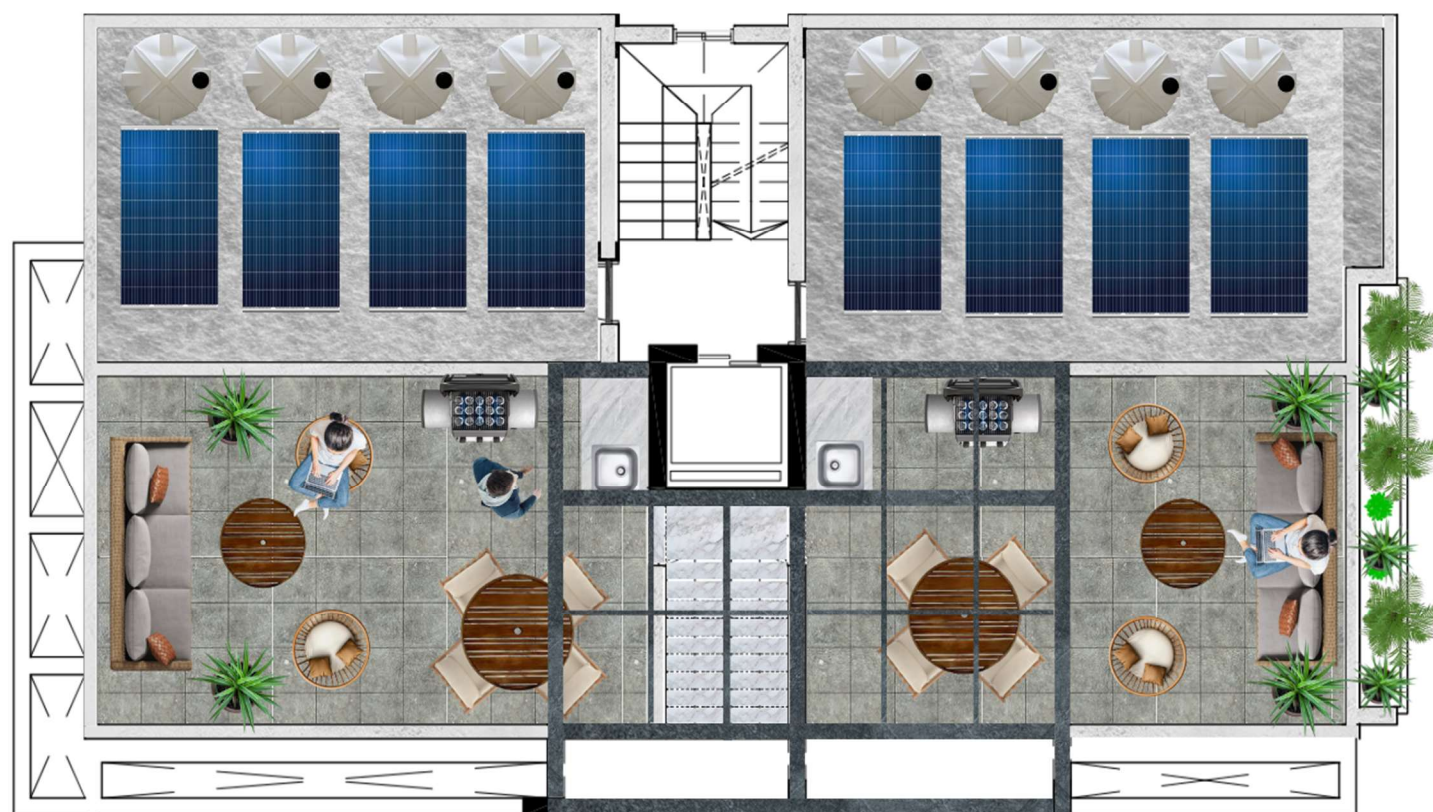
WWW.CYCONHOMES.COM

INFO@CYCONHOMES.COM

TEL +357 99 531241



OLYMPIC
ELITE RESIDENCES

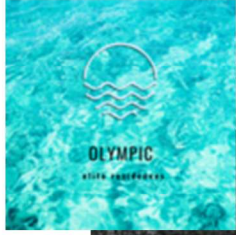


FLOOR PLANS : ROOF GARDEN

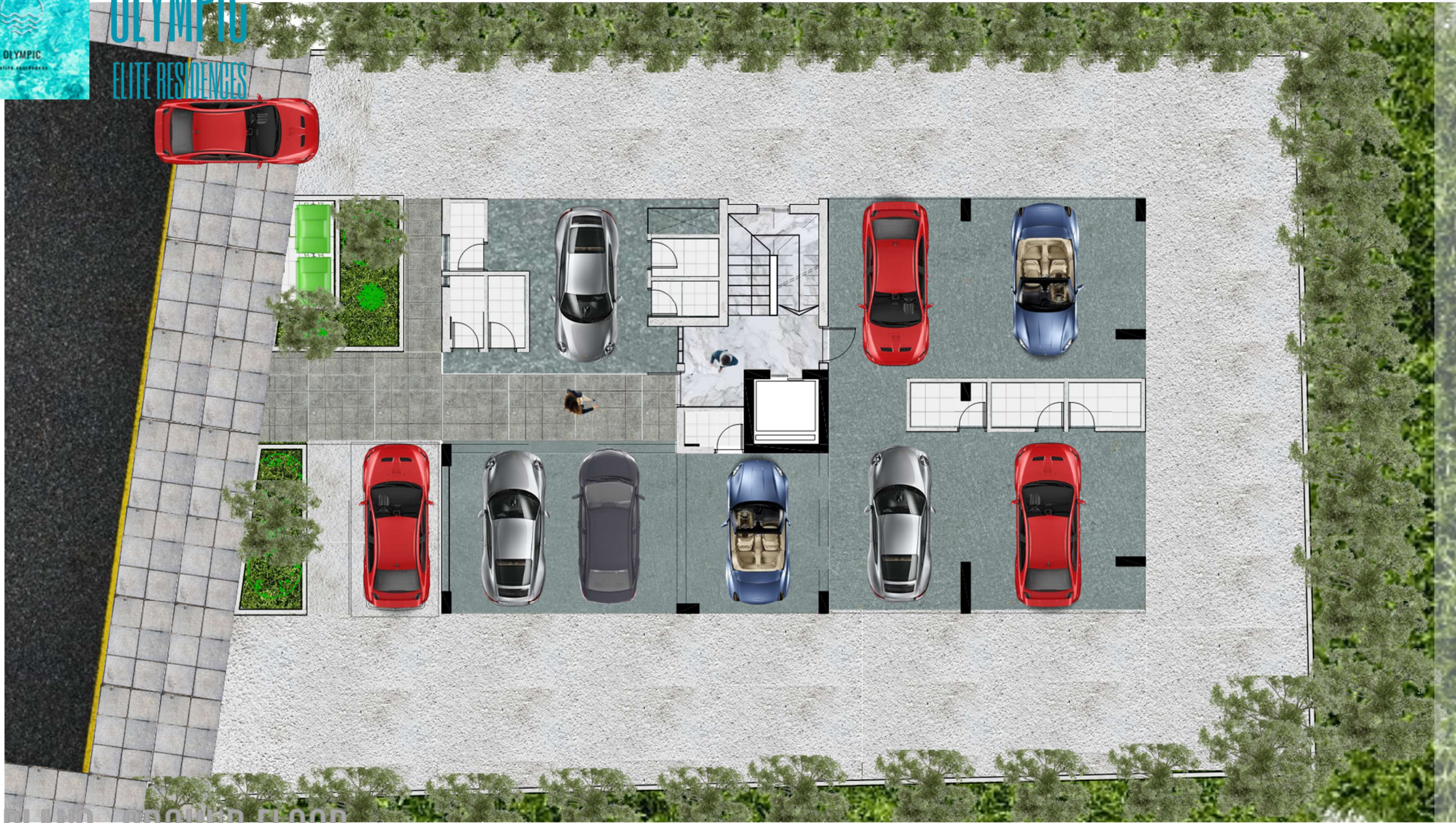
WWW.CYCONHOMES.COM

INFO@CYCONHOMES.COM

TEL +357 99 531241



OLYMPIC
ELITE RESIDENCES



FLOOR PLANS : GROUND FLOOR

WWW.CYCONHOMES.COM

INFO@CYCONHOMES.COM

TEL +357 99 531241



OLYMPIC

ELITE RESIDENCES



🌿 Discover Your Dream Home 🌿

Experience the perfect blend of convenience and tranquillity in OLYMPIC Elite Residences.

📍 Don't miss out! Contact us today to schedule a viewing and secure your dream home.

OLYMPIC ELITE RESIDENCE / OROKLINI - Larnaca

No.	Bedrooms	Bathrooms	Parking Areas	Internal Area	Common Area	Covered Verandas	Uncovered Verandas	Storage	Total
	No.	No.	No.	m2	m2	m2	m2	m2	m2
101	1	1	1	50,35	6	20,7	0	3	79,05
102	2	2	1	75,85	7	10,2	0	3	96,05
103	1	1	1	48,5	5	8,2	0	3	63,7
201	1	1	1	50,35	6	20,7	0	3	79,05
202	2	2	1	75,85	7	10,2	0	3	96,05
203	1	1	1	48,5	5	8,2	0	3	63,7
301	2	2	1	79,6	8	18,5	47,5	3	156,6
302	2	2	1	78,3	8	19	66,5	3	174,8



info@cyconhomes.com

www.cyconhomes.com +357 99531241
25 Gladstonos Str. / Larnaca / Cyprus