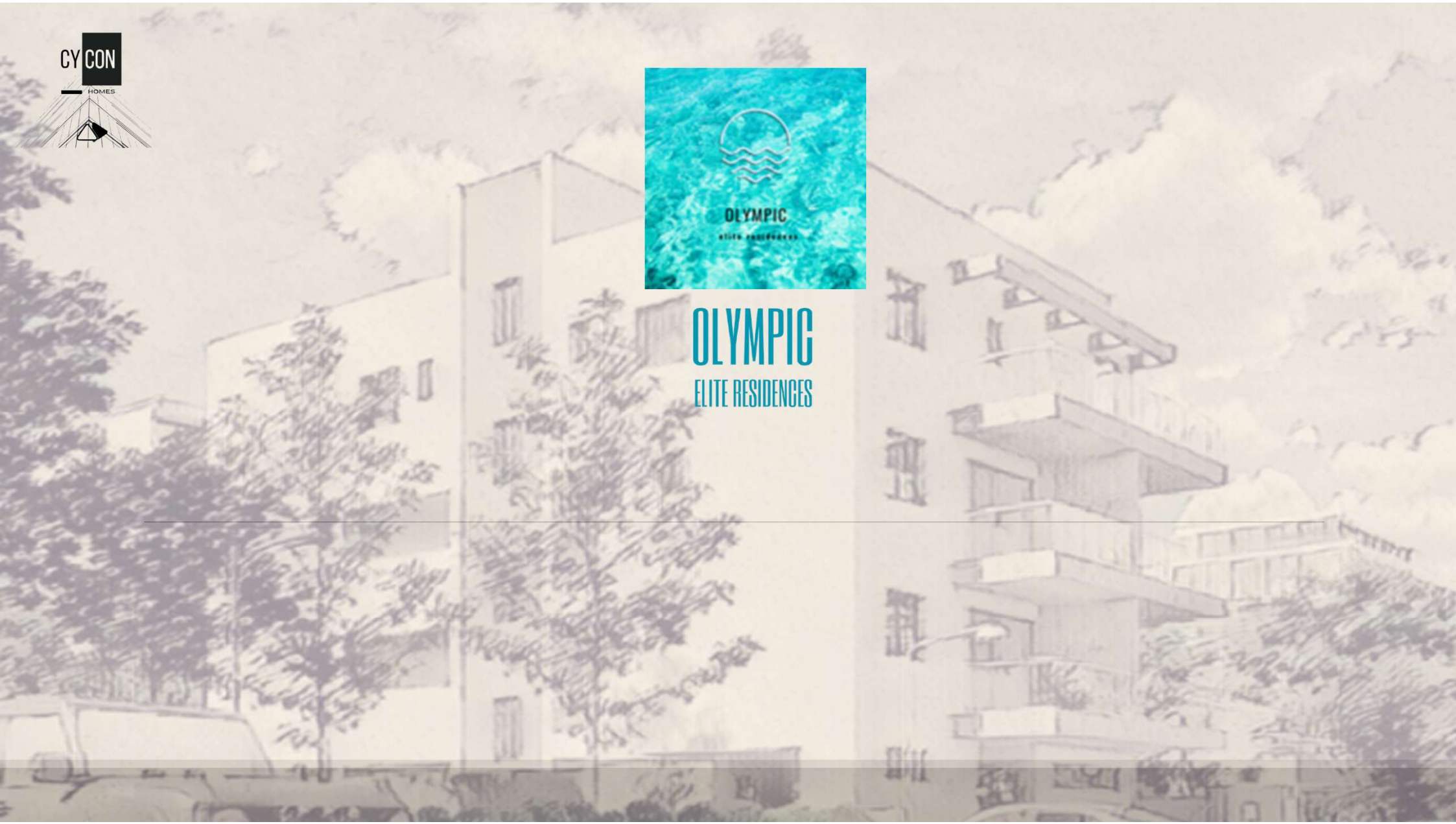


OLYMPIC

ELITE RESIDENCES



CY CON



OLYMPIC
ELITE RESIDENCES



OLYMPIC ELITE
RESIDENCES



CY CON
HOMES

OLYMPIC
ELITE RESIDENCES

**Introduction
and
location:**

The fastest growing city of Cyprus, Larnaca is the rising star of the island.

Larnaca is getting modernized but at the same time keeping its traditional character and easy way of living.

Getting transformed constantly and rapidly through a number of multi billion euros projects as the New Larnaca Marina -Larnaca Land of Tomorrow and others and with easy access through its airport , it is the perfect place for either vacation spot, permanent living or business hub.



Oroklini is a stunning coastal area in Larnaca, where city life blends harmoniously with the charm of seaside living and a thriving business and educational atmosphere.

- Blue flag beaches
- 5 star hotels and Spa
- Excellent dining establishments
- Variety of international coffee chains
- International Educational Institutions
- Beach sports
- Sports activities
- Seaside pedestrian trails





OLYMPIC ELITE RESIDENCES

The PROJECT: *OLYMPIC ELITE Residences* is located in a quiet residential area with unobstructed city and sea views.

It consists of 8 apartments – One and Two bedrooms – with the penthouses enjoying an enormous roof garden with stunning sea views.

All apartments benefit from a covered parking space as long as a storage room at the ground floor.



MAJOR AMENITIES:

- 1000 meters to sandy beaches
- 10 mins drive to Larnaca center
- 20 mins to Larnaca airport
- 5 mins drive to international universities
- 5 mins to 5 ★ hotels and spa
- Plethora of exceptional restaurants
- 5 mins drive to Larnaca Land of Tomorrow development.

CY CON

HOMES

OLYMPIC ELITE RESIDENCES



A charming residential building nestled in a peaceful, serene area, offering a perfect blend of convenience and tranquility.

Large windows stretch across the building, maximizing the stunning sea views.

Its location is ideal—quiet, yet easily accessible, with smooth, well-maintained roads leading to the entrance.



OLYMPIC ELITE RESIDENCES

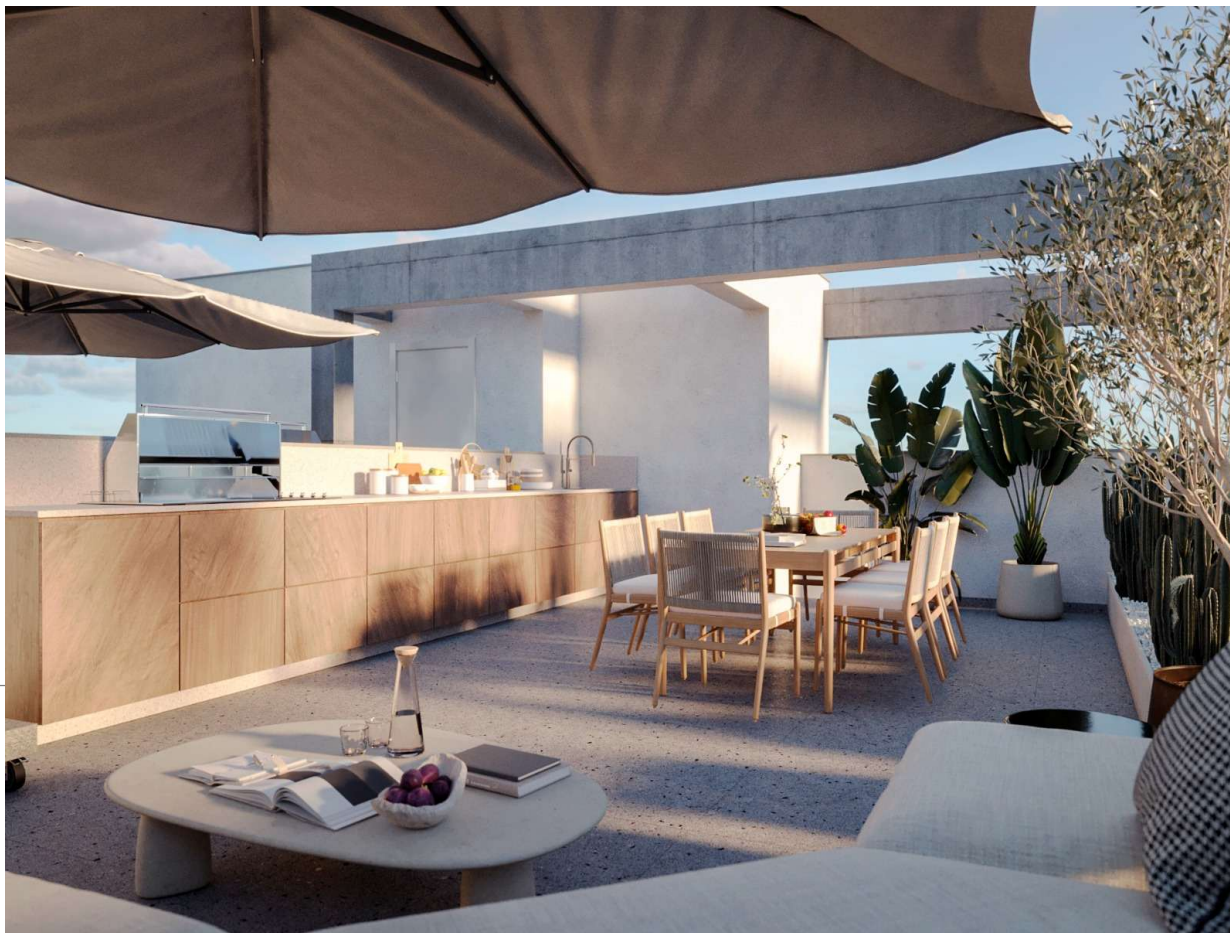
Spacious apartments, with open-concept living spaces that allow for an uninterrupted city and sea views from every room. The interiors boast high-end finishes, from marble countertops to sleek hardwood floors, and private balconies where you can sit back and watch the sunset over the horizon.



CY CON

HOMES

OLYMPIC
ELITE RESIDENCES



Stunning roof garden with unobstructed sea view, designed for relaxation and social gatherings. The space is ideal for outdoor dining.

CY CON

HOMES

Epifanios
monastery
Μονή Αγίου
Επιφανείου

E922

Oroklini Hill Top

E901

OLYMPIC
ELITE RESIDENCES

Oroklini
Ορόκλινη

Kellia
Κελιά

Dhekelia Sovereign
Base Area

DHEKELIA
ΔΕΚΕΛΙΑ

Ormideia
Ορμυδεία

Cessac Beach
(Dhekelia-Bay)

CTO Beach
ΚΟΤ

E920

B3

E922

A3

B3

E301

B3

E322

A3

E104

A3

E322

A3

B2

A3

E322

A3

A3

Aradippou
Αραδίππου

Livadia
Λιβαδία

Άγιου Σάββα

ΚΥΒΕΡΝΗΤΙΚΟΣ
ΟΙΚΙΣΜΟΣ ΑΓΙΟΥ
ΑΝΑΓΥΡΟΥ I

Lidl

Metropolis Mall
@Larnaca
Μετροπολις
Εμπορικό Κέντρο

Ομήρου

Kamaries Aqueduct
Υδραγωγείο,
Καμάρες Λάρνακας

Σπυριδίου

Λάρνακα

Faneromenis

Holy Church of
Saint Lazarus
Ιερός Ναός
Αγίου Λαζάρου

SKALA
ΣΚΑΛΑ

Larnaca Bay
Κόλπος Λάρνακας

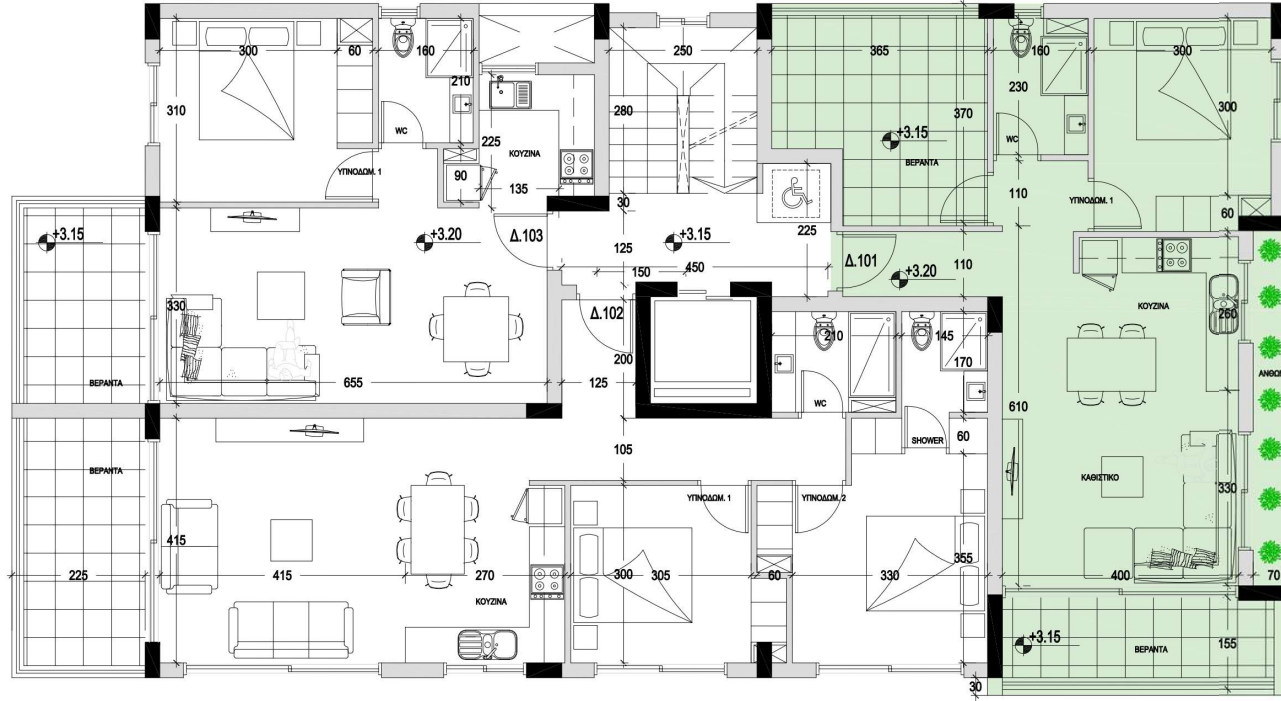
Google



FLOOR PLANS



OLYMPIC
ELITE RESIDENCES



ΚΑΤΩΨΗ Α ΟΡΟΦΟΥ

ΚΛΙΜΑΚΑ 1:100



APT. 101 / 201

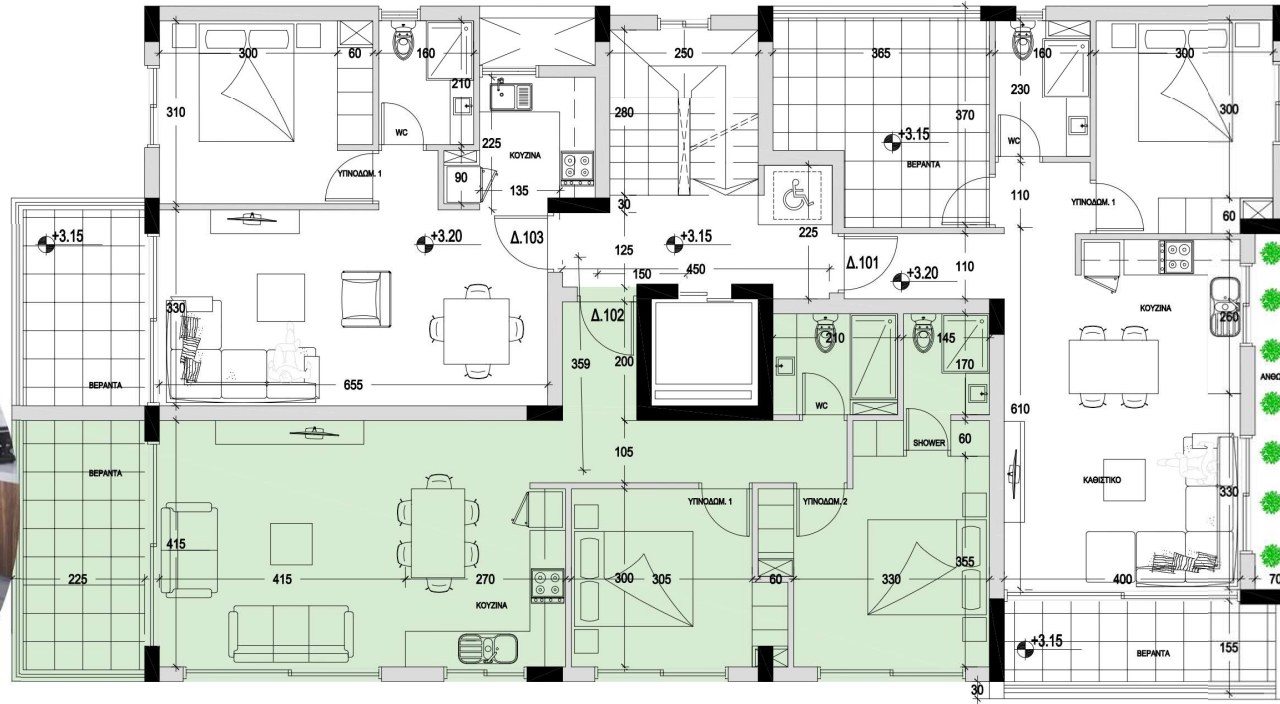
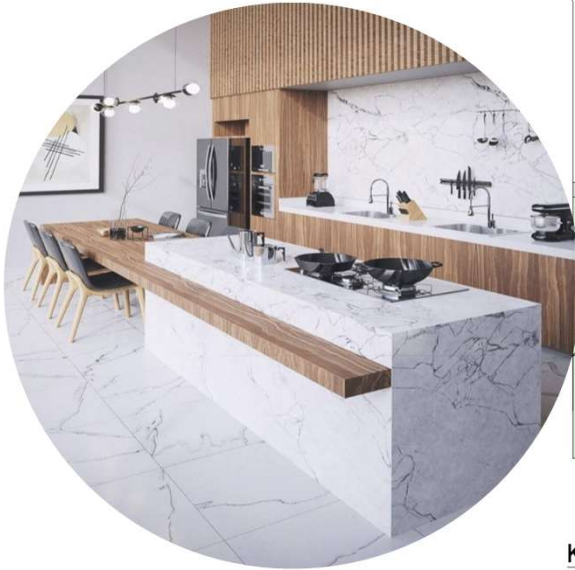
1BED	55.0 M2	INTERNAL AREA
	19.2 M2	COVERED VERANDA
	1	BATH
	1	COVERED PARKING
	1	STORAGE



FLOOR PLANS : 1ST / 2ND FLOOR



OLYMPIC
ELITE RESIDENCES



ΚΑΤΩΦΗ Α ΟΡΟΦΟΥ

ΚΛΙΜΑΚΑ 1:100

102 / 202

APT. 102 / 202

2BED

84.0 M2	INTERNAL AREA
10.2 M2	COVERED VERANDA
2	BATHS
1	COVERED PARKING
1	STORAGE

CY CON
HOMES

FLOOR PLANS : 1ST / 2ND FLOOR



OLYMPIC
ELITE RESIDENCES

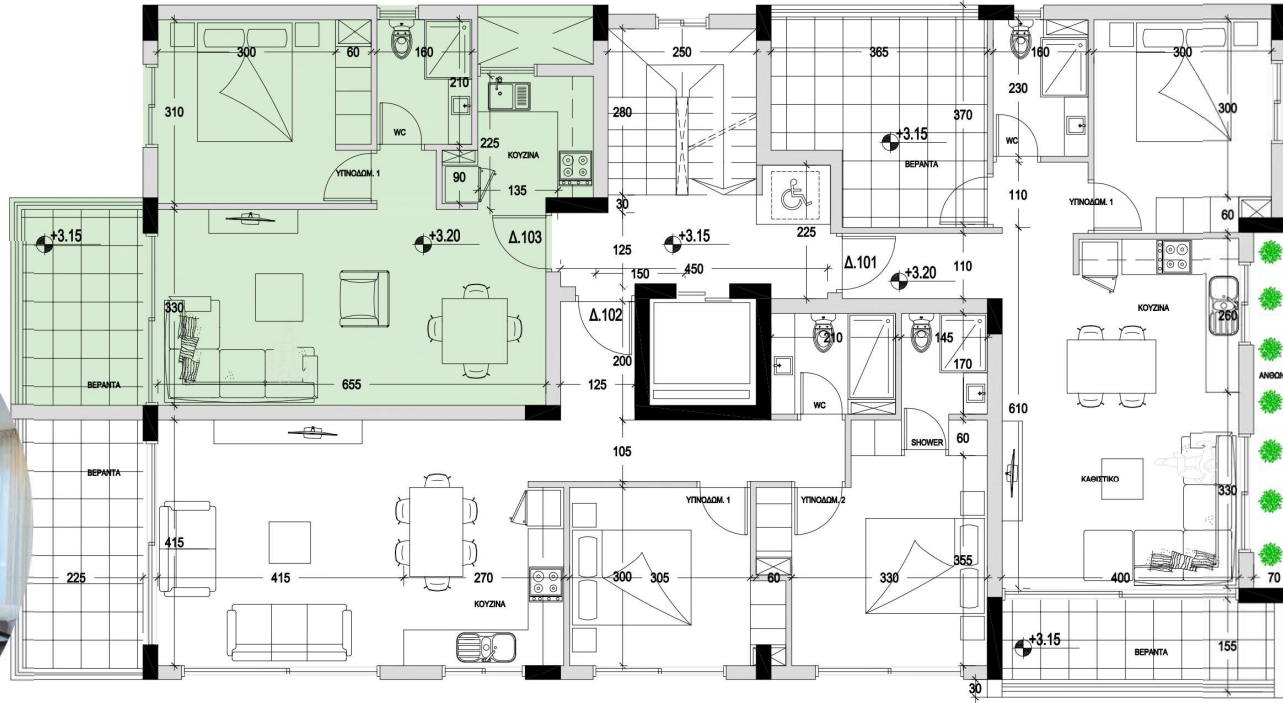


103 / 203

APT. 103 / 203

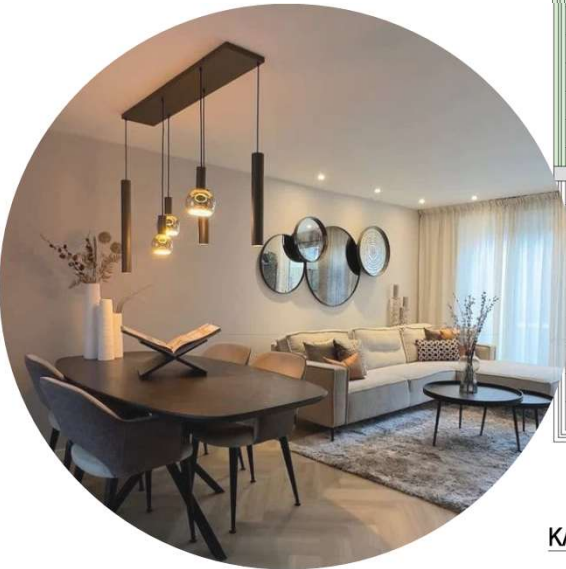
1BED 53.0 M2 INTERNAL AREA
8.15 M2 COVERED VERANDA
1 BATH
1 COVERED PARKING
1 STORAGE

CY CON
HOMES



ΚΑΤΟΨΗ Α ΟΡΟΦΟΥ

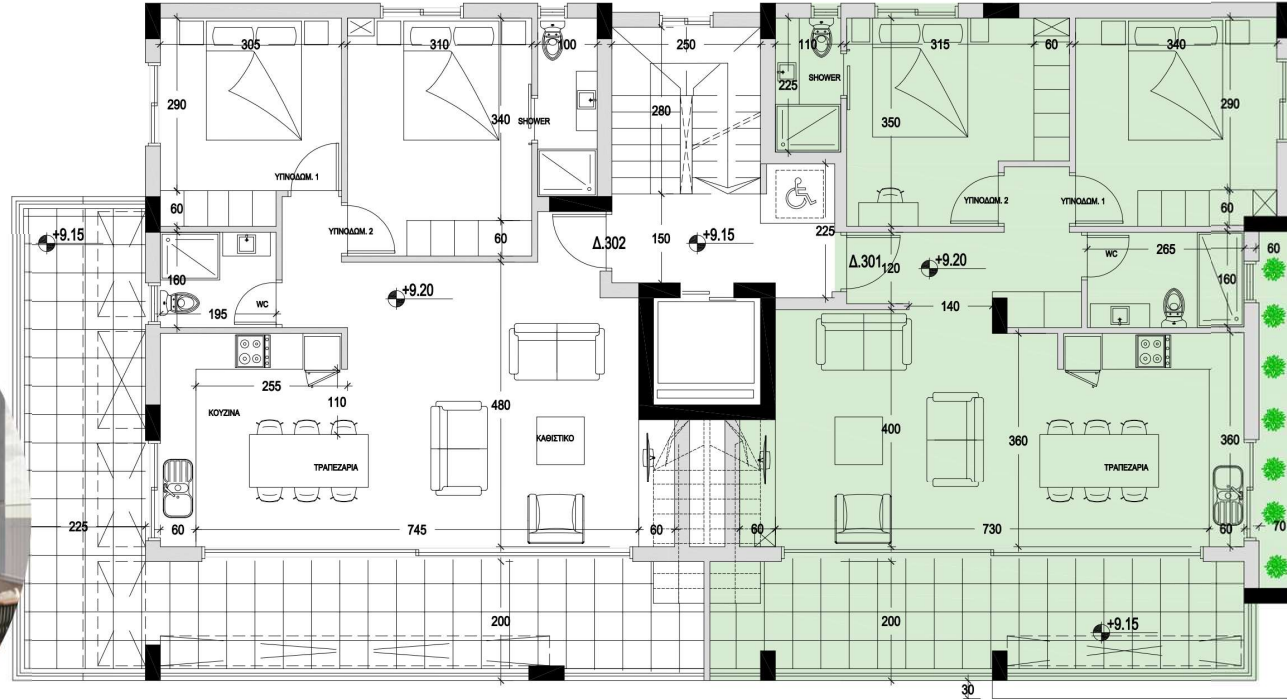
ΚΛΙΜΑΚΑ 1:100



FLOOR PLANS : 1ST / 2ND FLOOR



OLYMPIC
ELITE RESIDENCES



ΚΑΤΩΦΗ Γ ΟΡΟΦΟΥ

ΚΛΙΜΑΚΑ 1:100

APT. 301

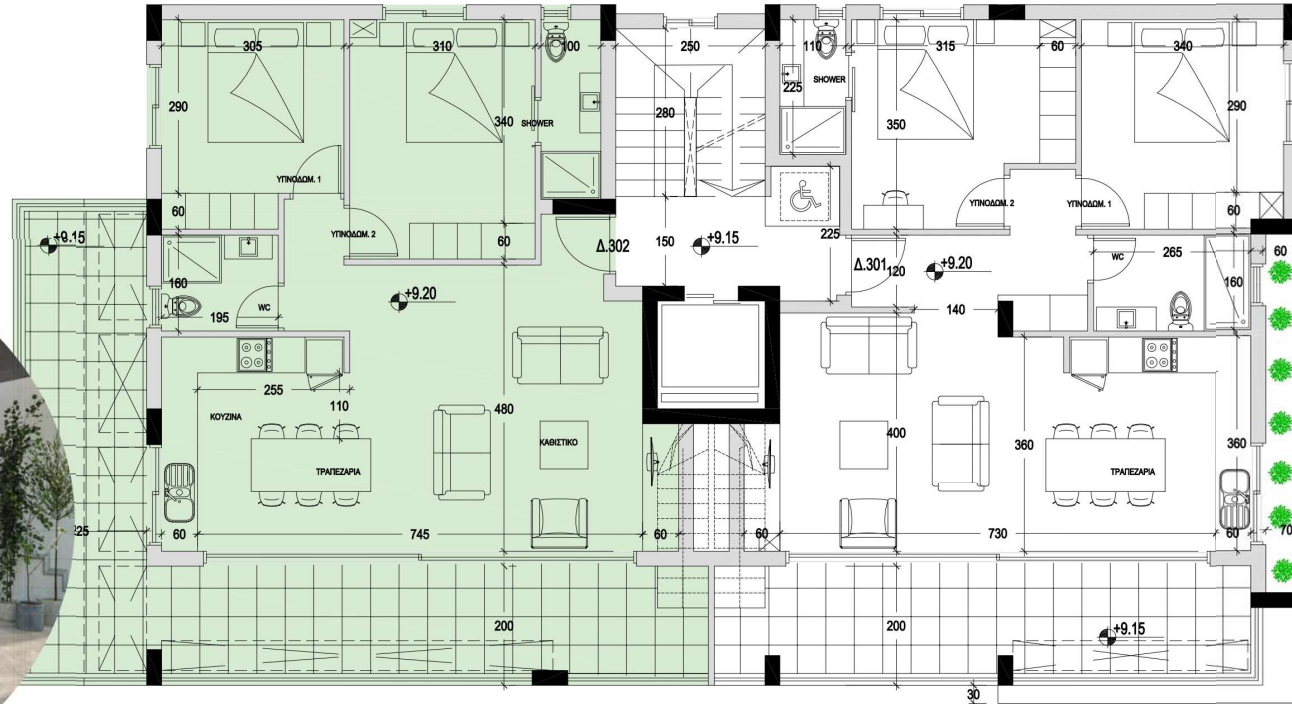
2BED

87.50 M2	INTERNAL AREA
16.25 M2	COVERED VERANDA
45.00 M2	ROOF GARDEN
2	BATHS
1	COVERED PARKING
1	STORAGE

FLOOR PLANS : 3 RD FLOOR




OLYMPIC
ELITE RESIDENCES



ΚΑΤΩΦΗ Γ ΟΡΟΦΟΥ

ΚΛΙΜΑΚΑ 1:100




302

APT. 302

2BED

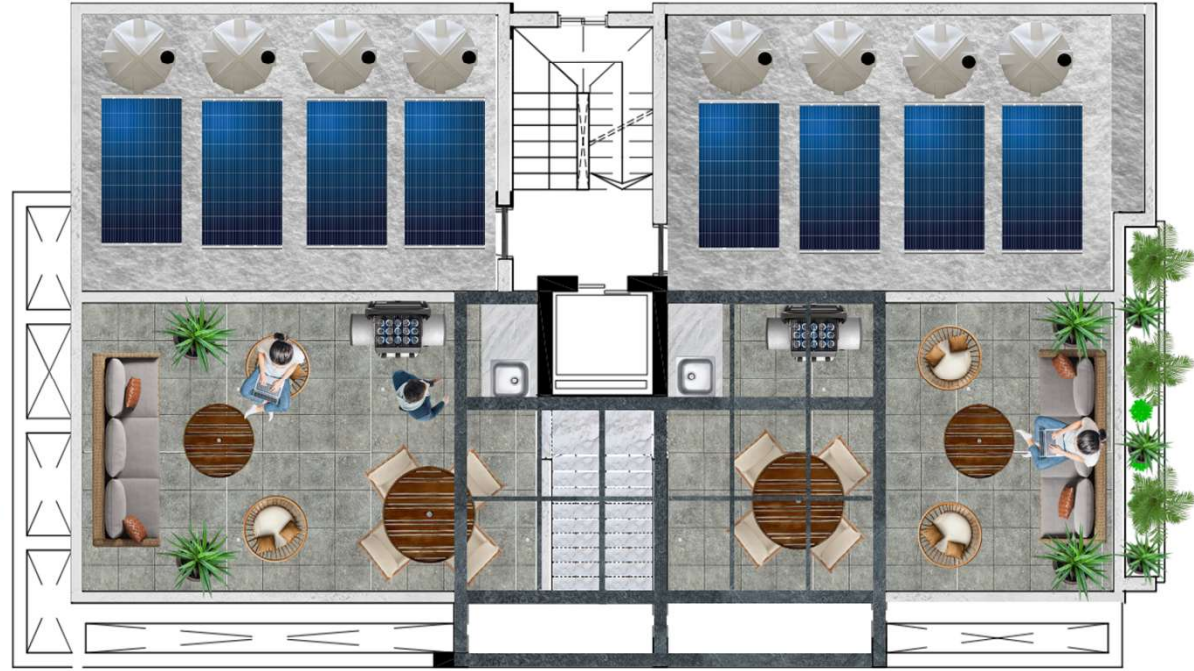
88.50 M2	INTERNAL AREA
15.55 M2	COVERED VERANDA
46.00 M2	ROOF GARDEN
2	BATHS
1	COVERED PARKING
1	STORAGE



FLOOR PLANS : 3 RD FLOOR



OLYMPIC
ELITE RESIDENCES



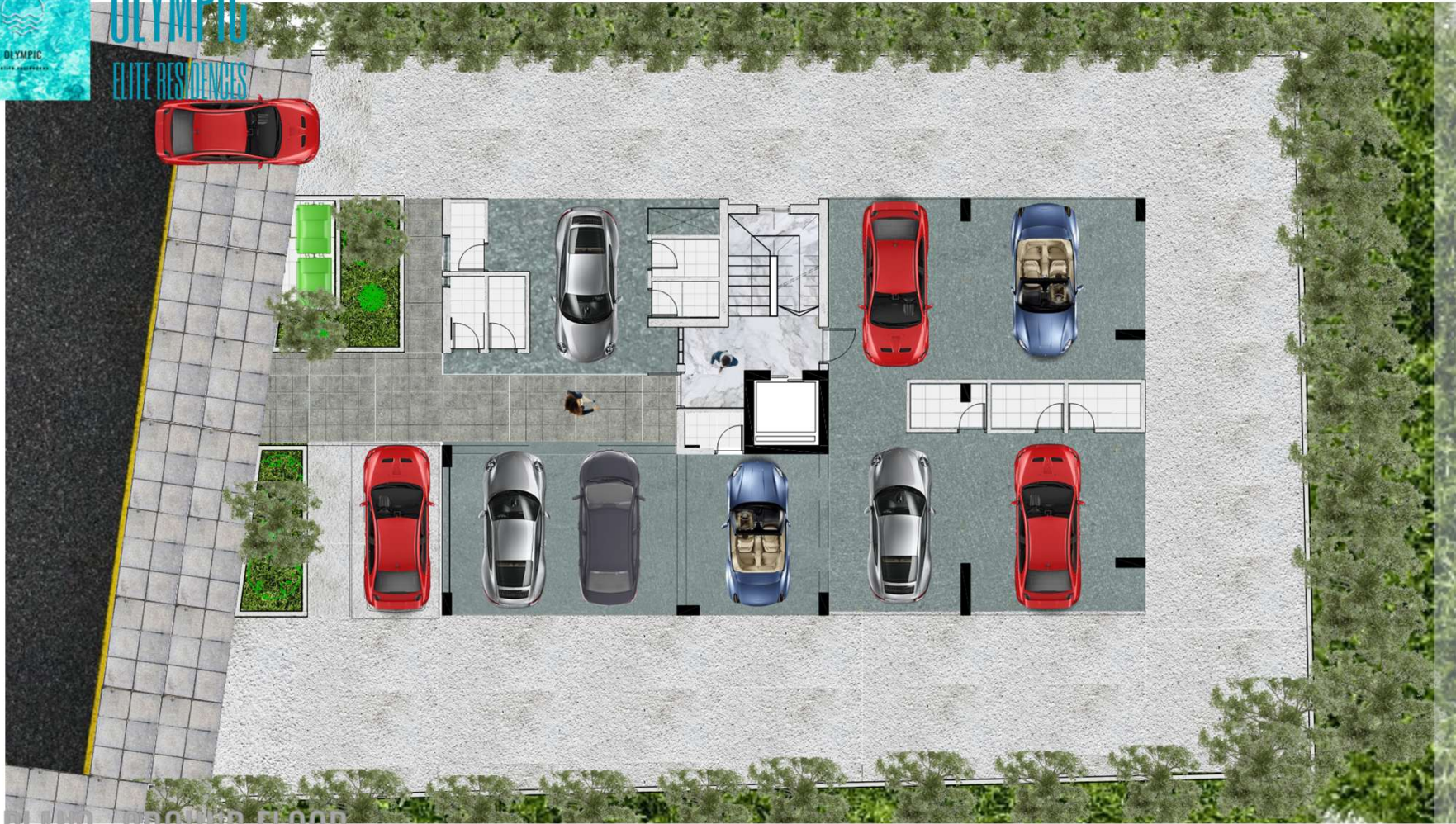
CY CON
HOMES



FLOOR PLANS : ROOF GARDEN



OLYMPIC
ELITE RESIDENCES



FLOOR PLANS : GROUND FLOOR



OLYMPIC ELITE RESIDENCES



🌿 Discover Your Dream Home 🌿

Experience the perfect blend of convenience and tranquility in OLYMPIC Elite Residences.

📍 Don't miss out! Contact us today to schedule a viewing and secure your dream home.

OLYMPIC ELITE RESIDENCE / OROKLINI - Larnaca

No.	Bedrooms	Bathrooms	Parking Areas	Internal Area	Common Area	Covered Verandas	Uncovered Verandas	Storage	Total
	No.	No.	No.	m2	m2	m2	m2	m2	m2
101	1	1	1	50,35	6	20,7	0	3	79,05
102	2	2	1	75,85	7	10,2	0	3	96,05
103	1	1	1	48,5	5	8,2	0	3	63,7
201	1	1	1	50,35	6	20,7	0	3	79,05
202	2	2	1	75,85	7	10,2	0	3	96,05
203	1	1	1	48,5	5	8,2	0	3	63,7
301	2	2	1	79,6	8	18,5	47,5	3	156,6
302	2	2	1	78,3	8	19	66,5	3	174,8

CYCON

HOMES



info@cyconhomes.com

www.cyconhomes.com +357 99531241

25 Gladstonos Str. / Larnaca / Cyprus