



# OLYMPIQ PARK RESIDENCE

YOUR HOME - OUR PRIORITY



CY CON

HOMES







**Introduction and location:** The fastest growing city of Cyprus, Larnaca is the rising star of the island. Larnaca is getting modernized but at the same time keeping its traditional character and easy way of living.

Getting transformed rapidly through a number of multi billion euros projects as the New Larnaca Marina -Larnaca Land of Tomorrow and others and with easy access through its airport , it is the perfect place for either vacation spot, permanent living or business hub.



- **OLYMPIQ Park** is strategically located into a quiet residential area, adjacent to a public green area in very close proximity to Metropolis Mall, city center, beach and easy access to all major highways.
- Blue flag beaches in short drive distance.
- All major amenities nearby.
- Variety of international coffee chains
- International Educational Institutions
- Sports activities

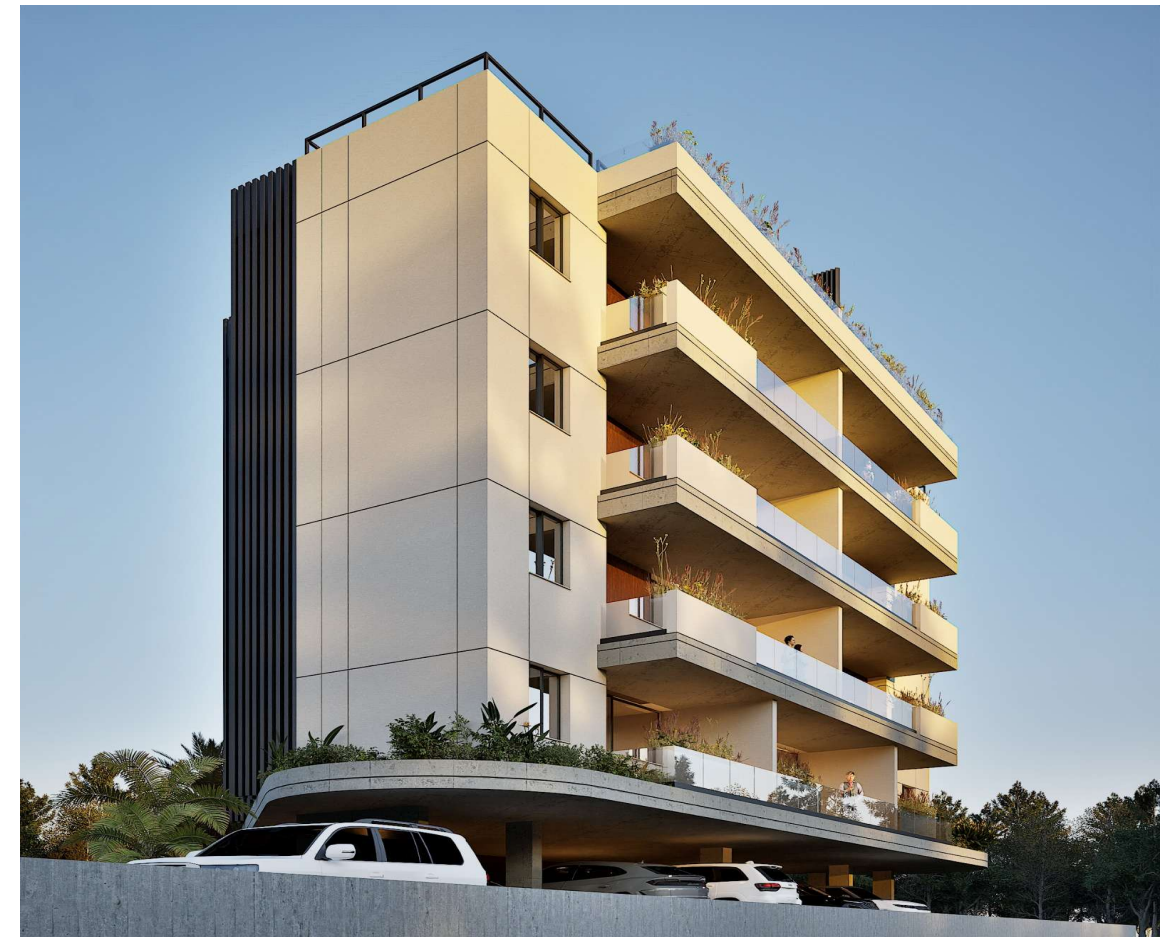


**The PROJECT:**

OLYMPIQ Park Residences is located in a quiet residential area with unobstructed city views.

It consists of 9 apartments – One and Two bedrooms – with the penthouses enjoying an enormous roof garden with stunning city views.

All apartments benefit from a covered parking space as long as a storage room at the roof.



**MAJOR AMENITIES:**


- 1000 meters to sandy beaches
- 10 mins drive to Larnaca center
- 15 mins to Larnaca airport
- 5 mins drive to international universities
- Plethora of exceptional restaurants
- 5 mins drive to Larnaca Land of Tomorrow development.



to larnaca airport  
15 mins

  
OLYMPIQ  
PARK

to larnaca marina  
10 mins

  
metropolis mall

  
City center

horizon towers  
land of tomorrow

larnaca marina

marina

finikoudes beach

mackenzie beach

# LARNACA

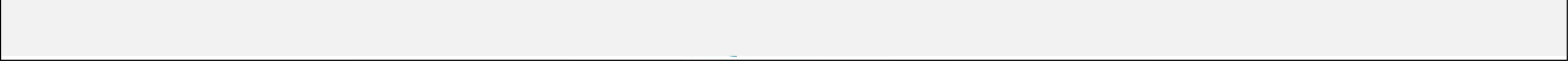
CYPRUS

34.9232° N / 33.6086° E



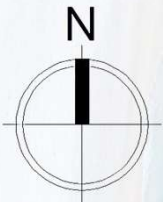
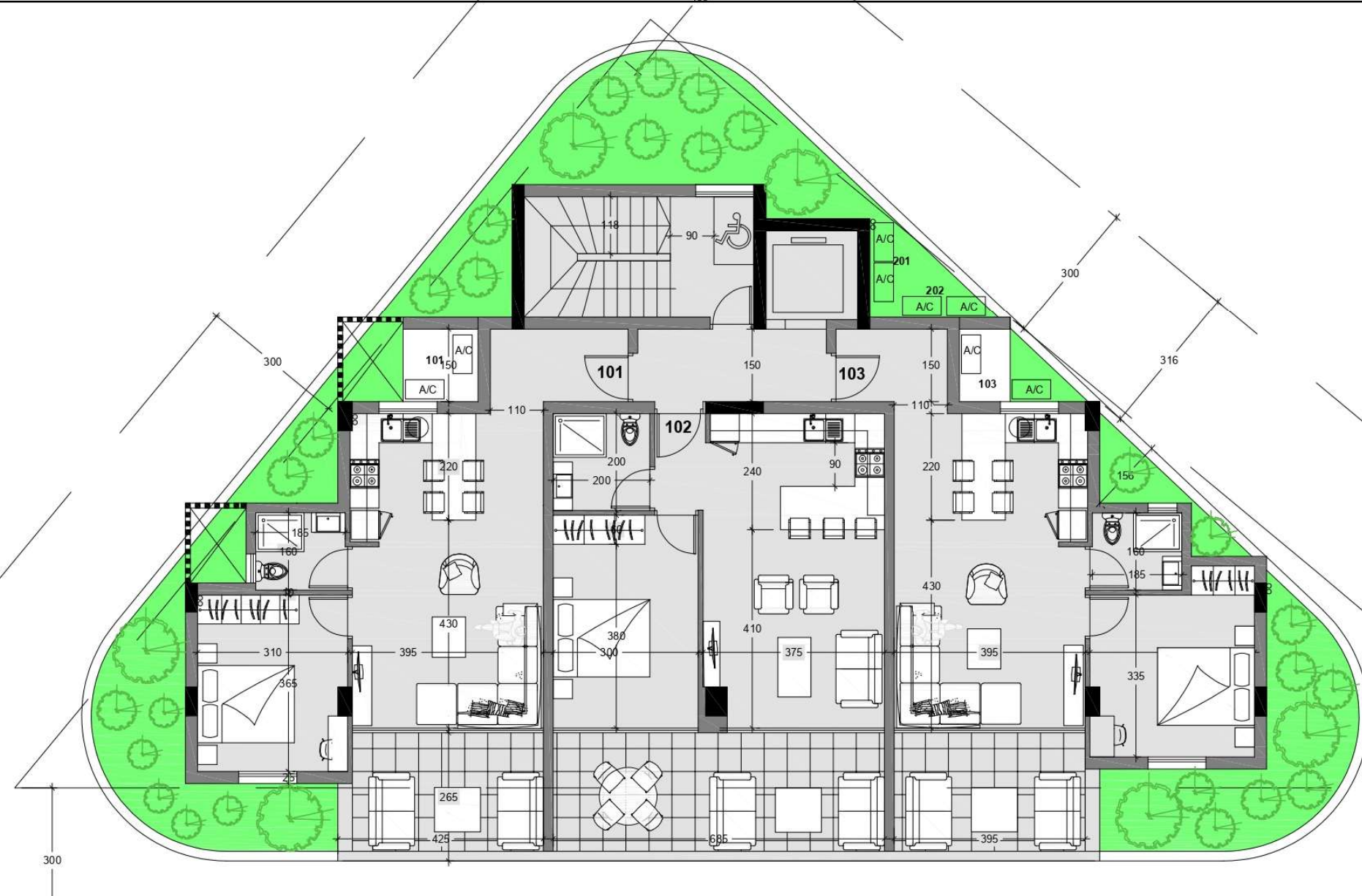


# FLOOR PLANS





OLYMPIQ PARK  
RESIDENCE  
YOUR HOME - OUR PRIORITY



FLOOR PLANS: 1<sup>ST</sup> FLOOR

APT. 101

INTERNAL AREA	52.35 M <sup>2</sup>
VERANDA	11.20 M <sup>2</sup>
STORAGE	1
PARKING SPACE	1

APT. 102

INTERNAL AREA	48.05 M <sup>2</sup>
VERANDA	18.70 M <sup>2</sup>
STORAGE	1
PARKING SPACE	1

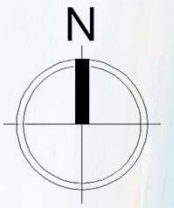
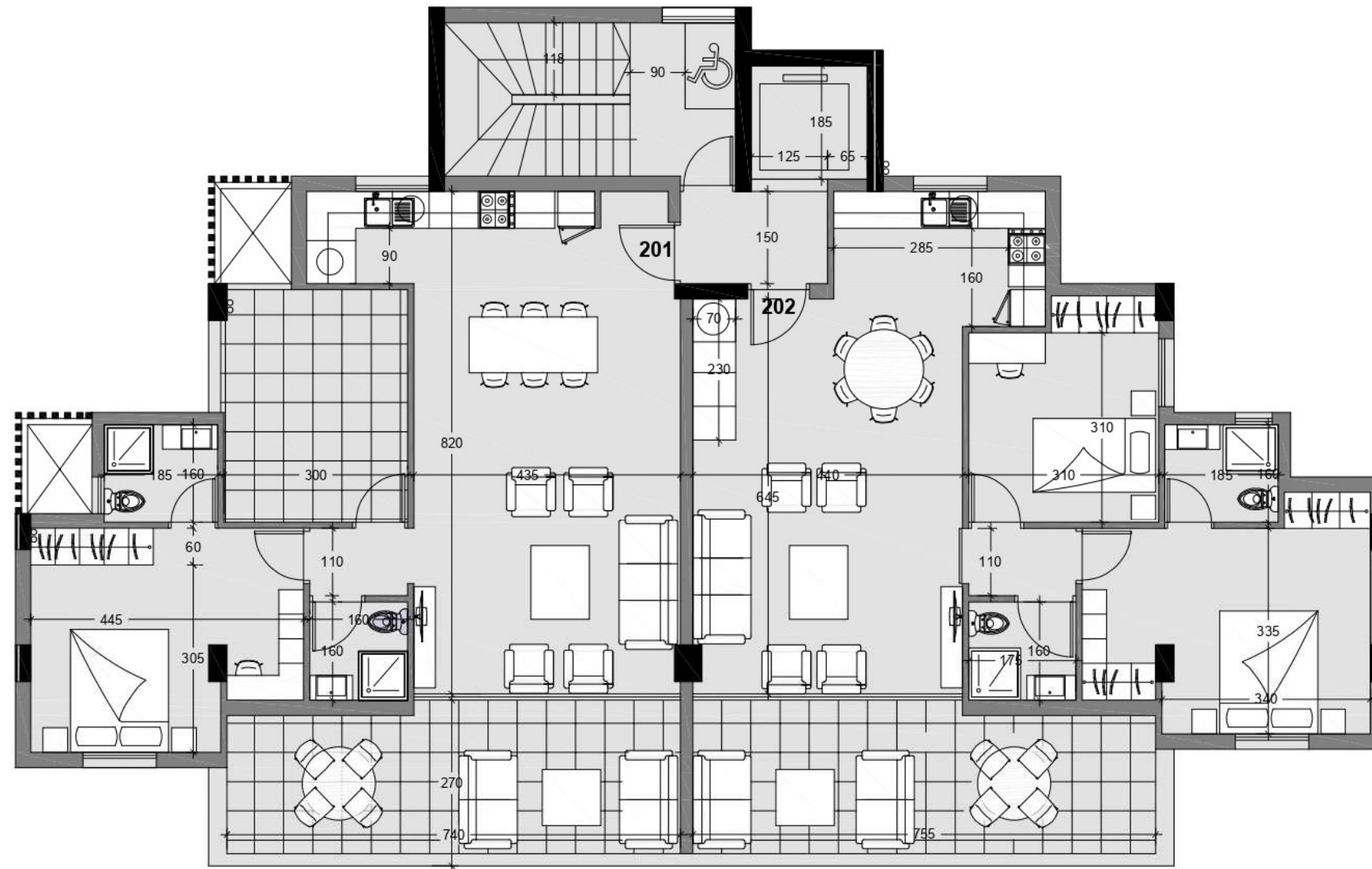
APT. 103

INTERNAL AREA	52.25 M <sup>2</sup>
VERANDA	11.30 M <sup>2</sup>
STORAGE	1
PARKING SPACE	1





OLYMPIQ PARK  
RESIDENCE  
YOUR HOME - OUR PRIORITY



FLOORPLANS: 2<sup>ND</sup> FLOOR

### APT. 201

INTERNAL AREA	69.40 M <sup>2</sup>
VERANDA	32.00 M <sup>2</sup>
STORAGE	1
PARKING SPACE	1

50

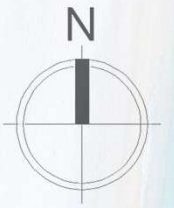
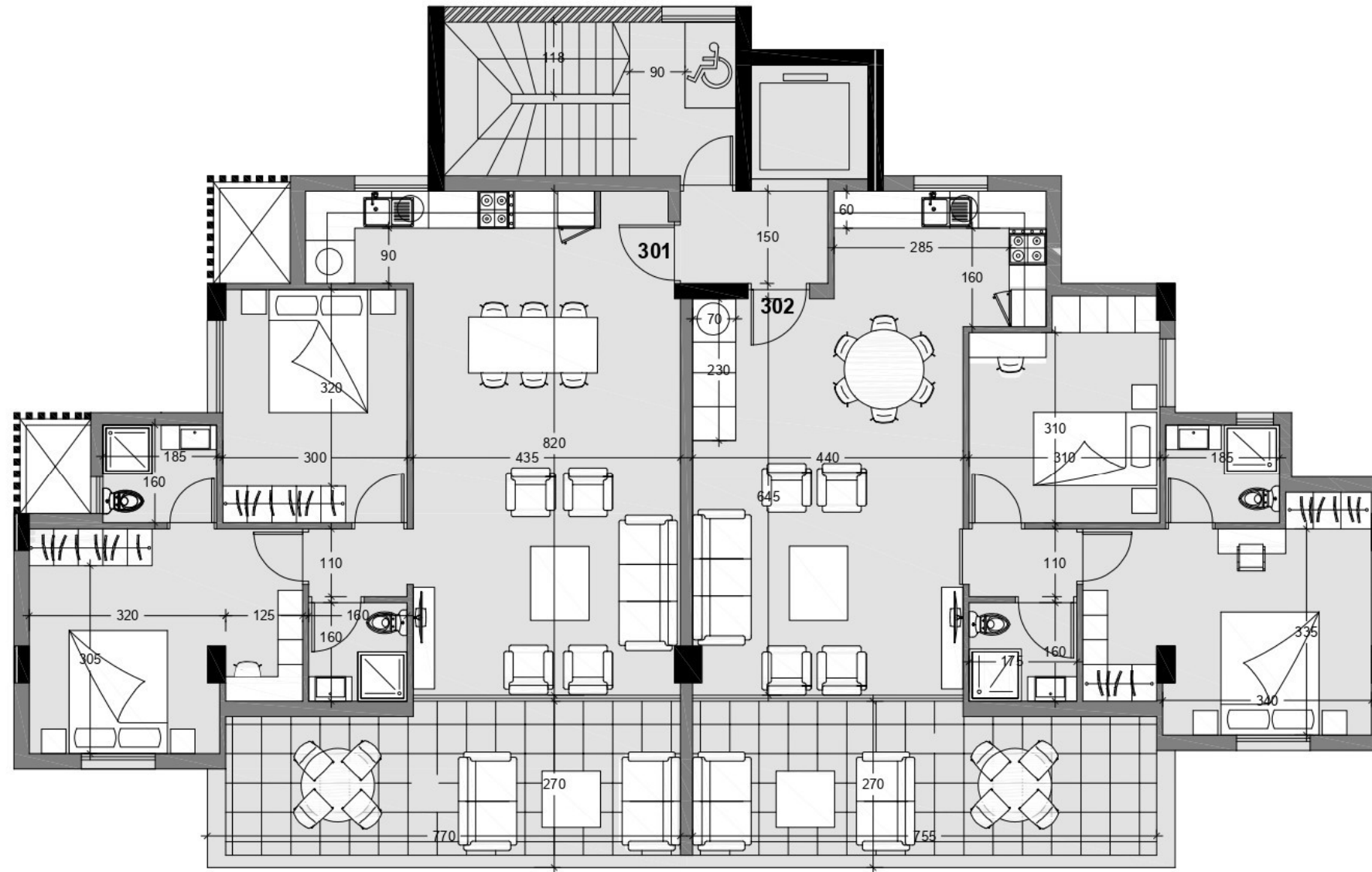
### APT. 202

INTERNAL AREA	79.05 M <sup>2</sup>
VERANDA	20.50 M <sup>2</sup>
STORAGE	1
PARKING SPACE	1





OLYMPIQ PARK  
RESIDENCE  
YOUR HOME - OUR PRIORITY



FLOOR PLANS: 3<sup>RD</sup> FLOOR

APT. 301

0

INTERNAL AREA	81.45 M <sup>2</sup>
VERANDA	20.00 M <sup>2</sup>
STORAGE	1
PARKING SPACE	1

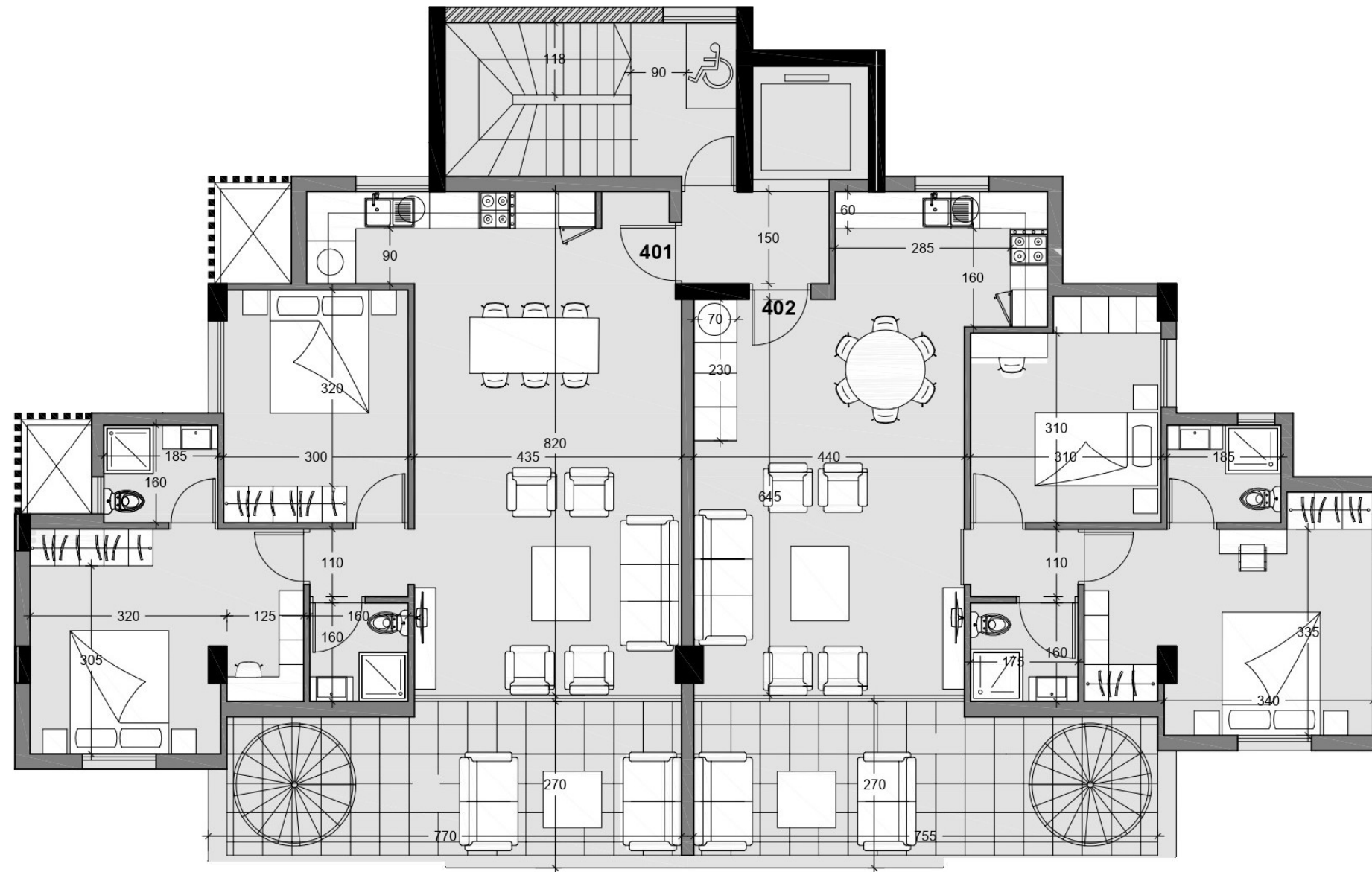
APT. 302

INTERNAL AREA	79.05 M <sup>2</sup>
VERANDA	20.50 M <sup>2</sup>
STORAGE	1
PARKING SPACE	1





OLYMPIQ PARK  
RESIDENCE  
YOUR HOME - OUR PRIORITY

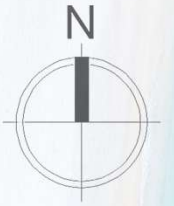


### APT. 401

INTERNAL AREA	81.45 M <sup>2</sup>
VERANDA	20.00 M <sup>2</sup>
ROOF TOP	34.00 M <sup>2</sup>
STORAGE	1
PARKING SPACE	2

### APT. 402

INTERNAL AREA	79.05 M <sup>2</sup>
VERANDA	20.50 M <sup>2</sup>
ROOF TOP	35.00 M <sup>2</sup>
STORAGE	1
PARKING SPACE	2

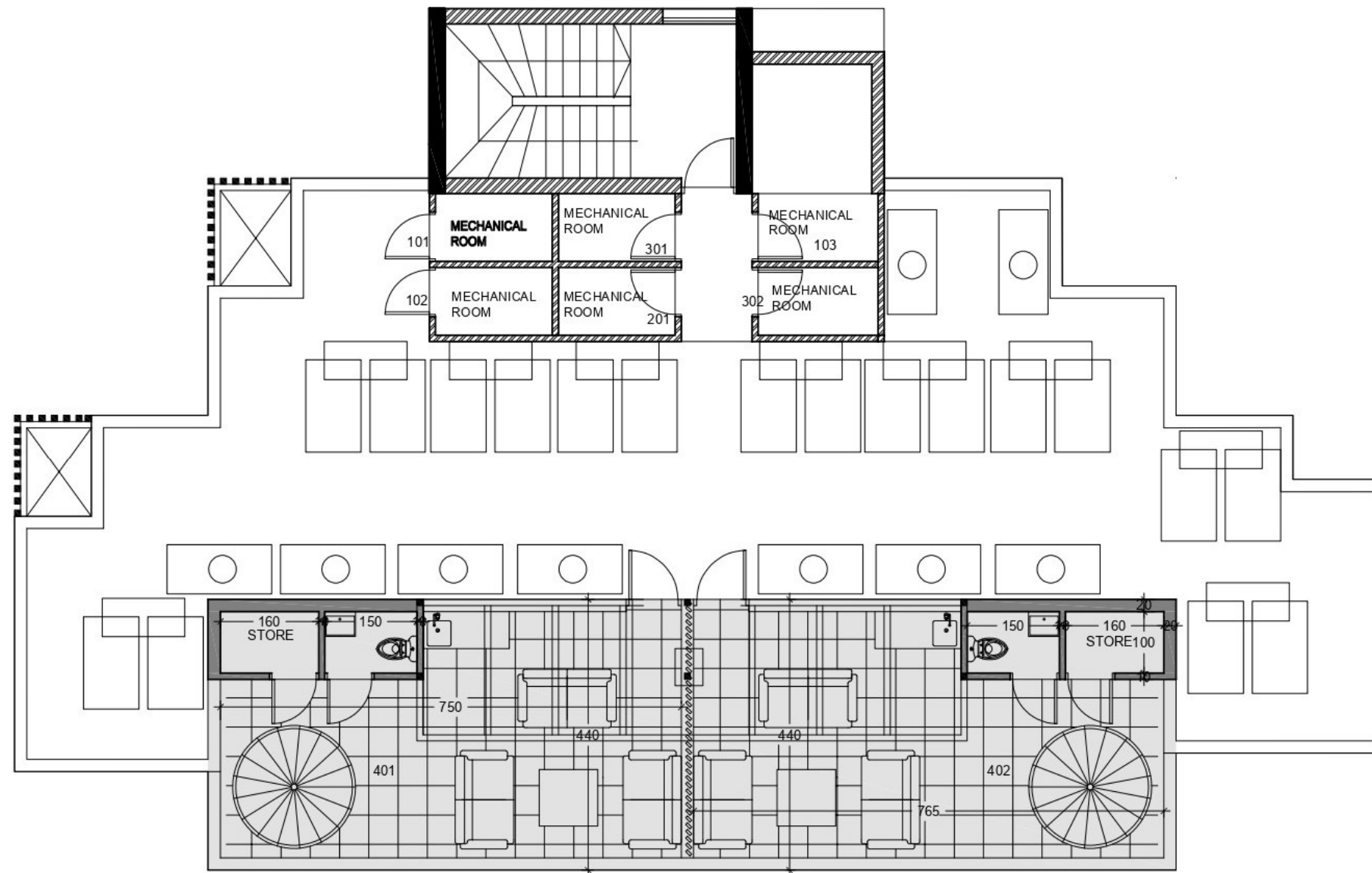


FLOORPLANS: 4<sup>TH</sup> FLOOR





OLYMPIQ PARK  
RESIDENCE  
YOUR HOME - OUR PRIORITY

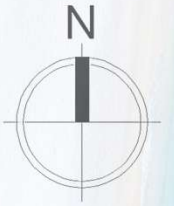


### APT. 401

INTERNAL AREA	81.45 M <sup>2</sup>
VERANDA	20.00 M <sup>2</sup>
ROOF TOP	34.00 M <sup>2</sup>
STORAGE	1
PARKING SPACE	2

### APT. 402

INTERNAL AREA	79.05 M <sup>2</sup>
VERANDA	20.50 M <sup>2</sup>
ROOF TOP	35.00 M <sup>2</sup>
STORAGE	1
PARKING SPACE	2



FLOOR PLANS: ROOF





OLYMPIQ PARK  
RESIDENCE  
YOUR HOME - OUR PRIORITY



## FLOOR PLANS: GROUND

